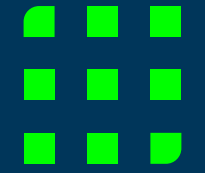




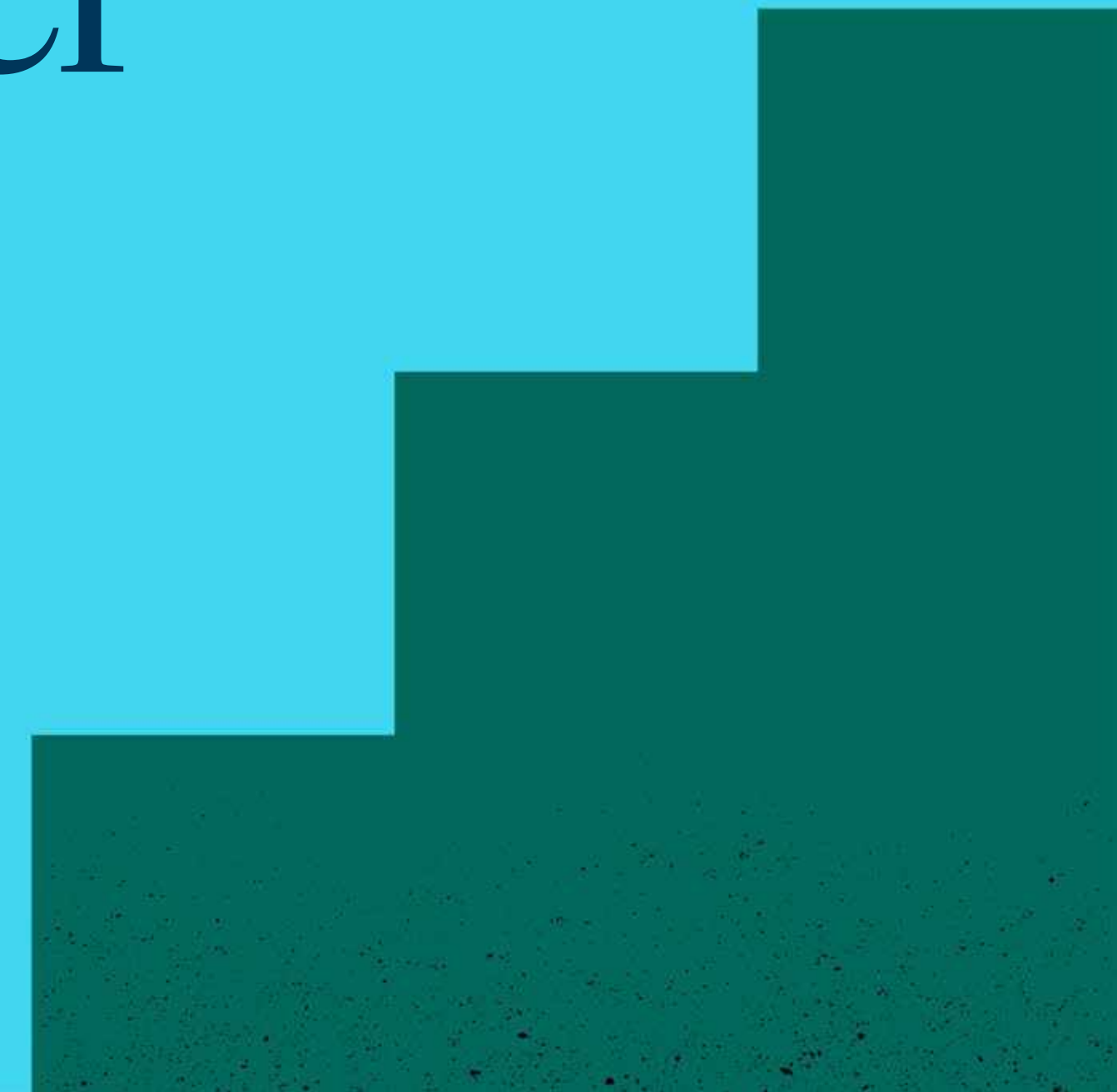
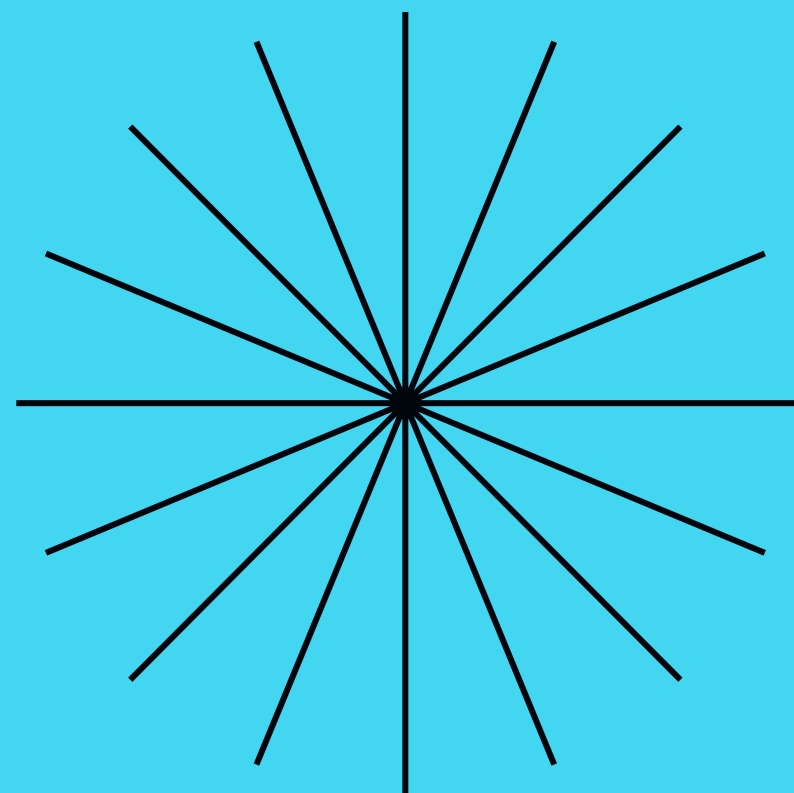
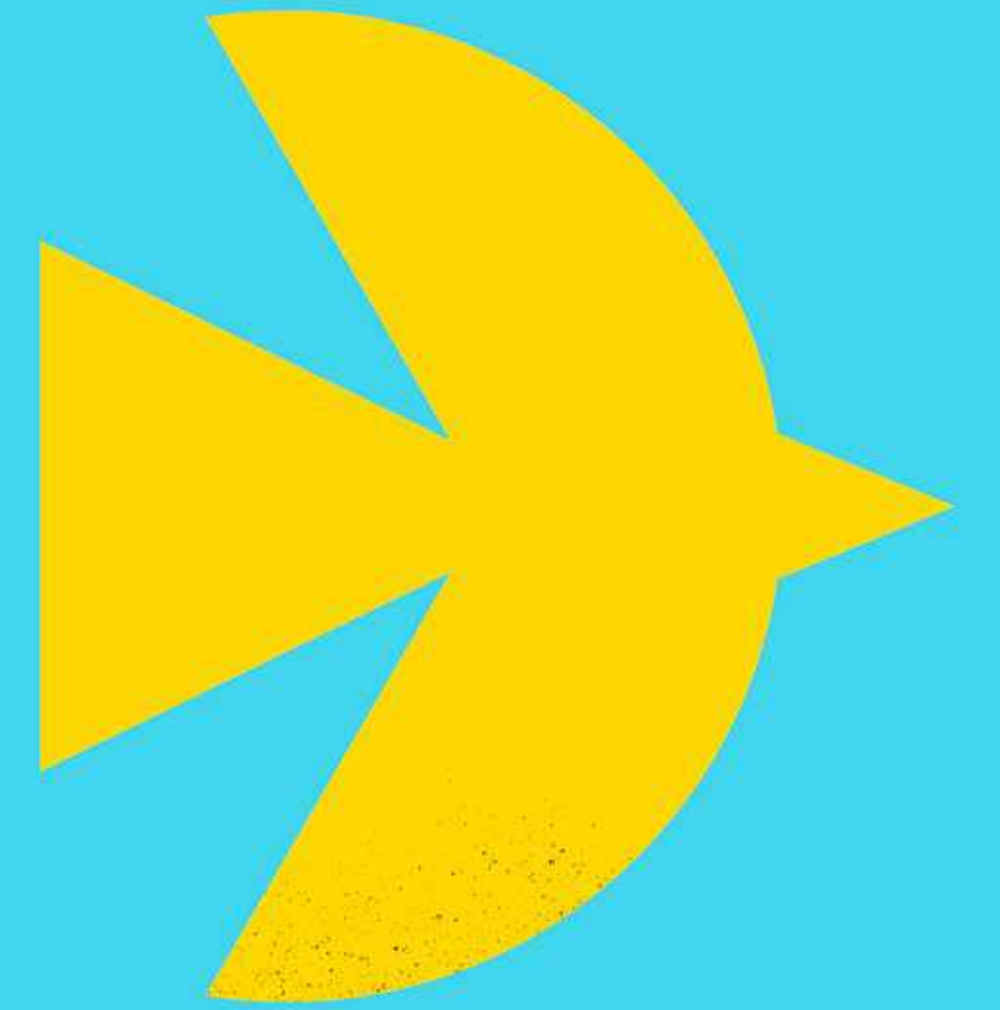
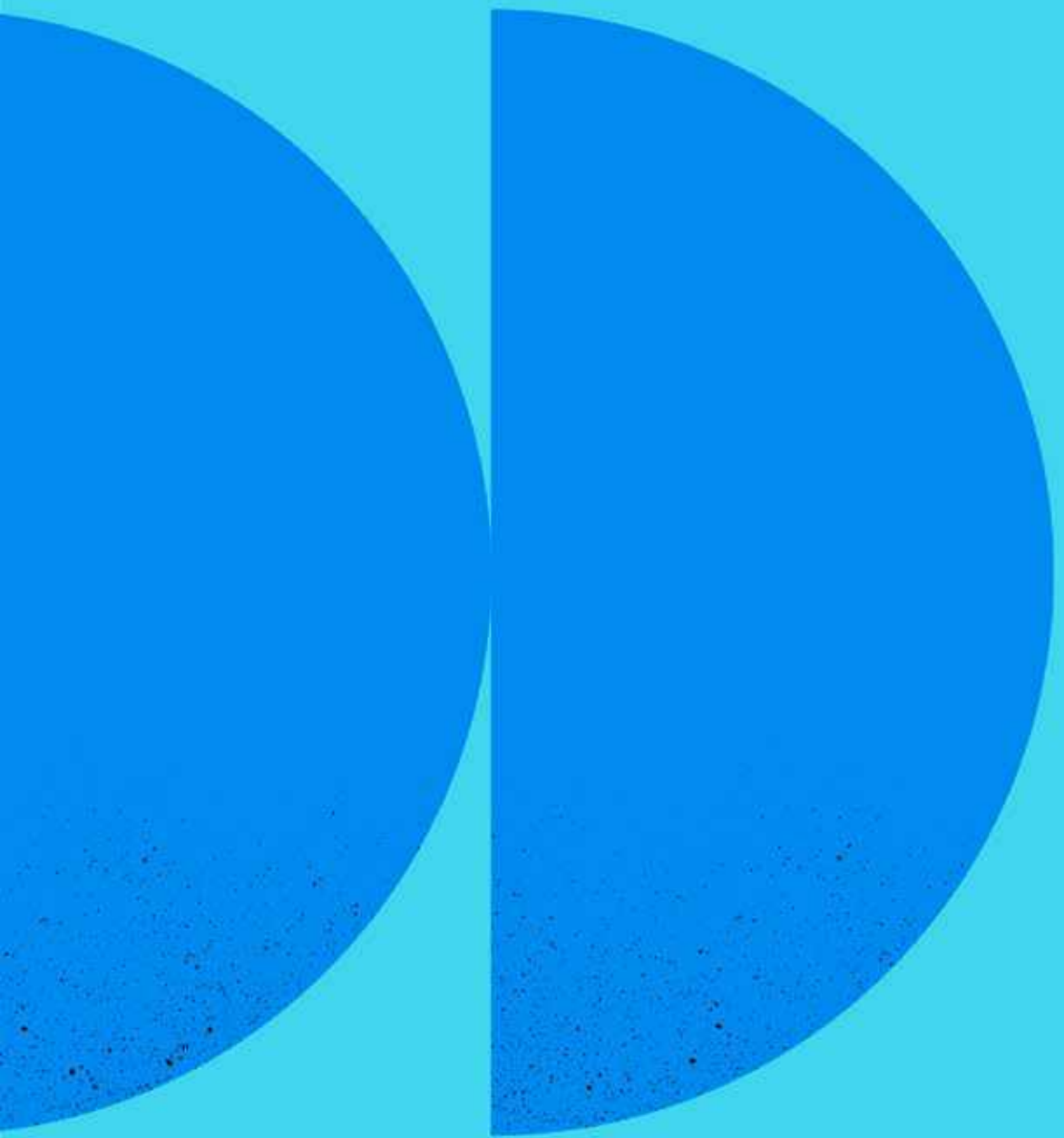
AccelerateESG

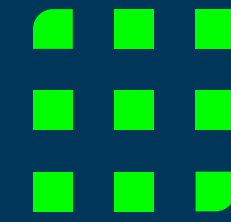
BY BROOKFIELD PROPERTIES

Real estate,
reimagined.



Let's go further
and faster, together





The climate crisis is escalating and Britain's forward-thinking businesses are going all out for **net zero**

50%

The increase in carbon in the earth's atmosphere since the industrial revolution.¹

80%

The percentage of emissions in London that come from its buildings.²

5,101

The number of companies that have set a science based target to reduce greenhouse gas emissions.³

References:

1. [Met Office: Atmospheric CO2 now hitting 50% higher than pre-industrial levels](#)

2. [London's buildings emit the highest share of carbon of any major city](#)

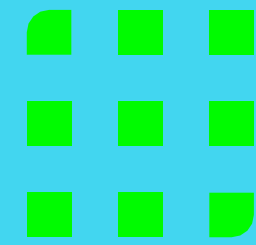
3. [Science based Targets.org](#)

At Brookfield Properties, we invest at scale to power ESG progress

As one of London's largest office portfolios, we've committed investment to halving our carbon emissions by 2030. We will do this by forging powerful partnerships with occupiers, stakeholders and communities.

More than a landlord,
a partner





INTRODUCING

AccelerateESG

Our service for going further and faster, together.

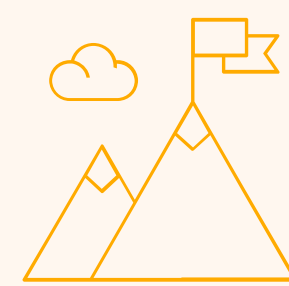
We bring investment and expertise, partnering
with our tenants to collaborate on ESG goals
so we can achieve more, together.

Part of a unique formula of occupier services

Brookfield Properties is always engaged and on the ground, improving your working day. Accelerate ESG forms one of three services:

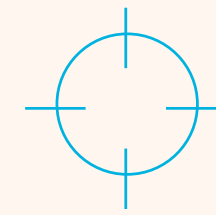


Making sustainability simple



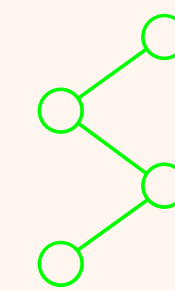
Deliver

Achieve your sustainability goals through a cycle of improvement and feedback



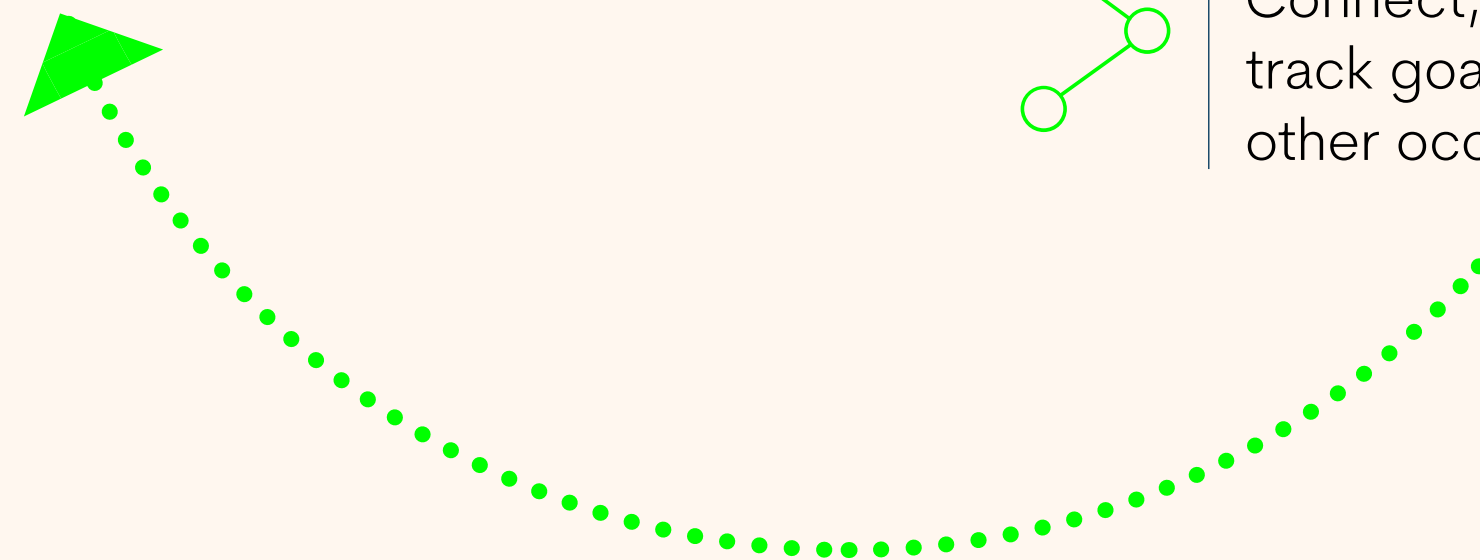
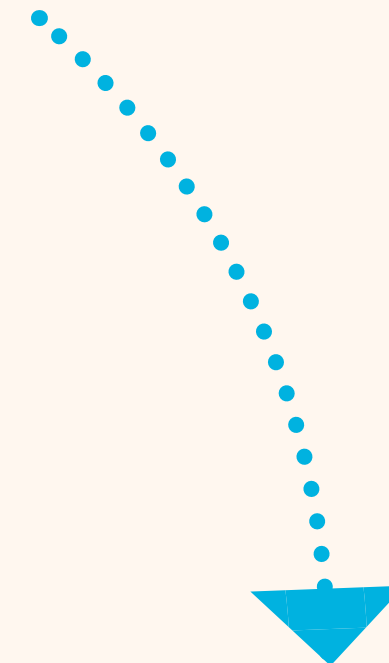
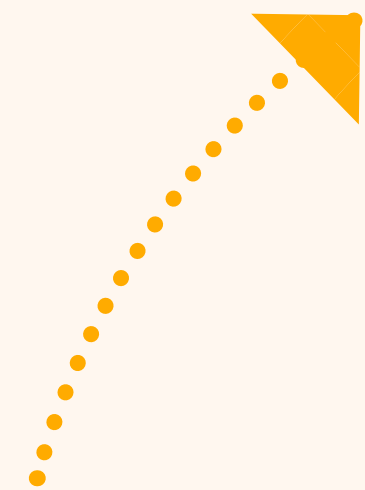
Track

Access both the short-term data and long-term strategy for your building



Connect

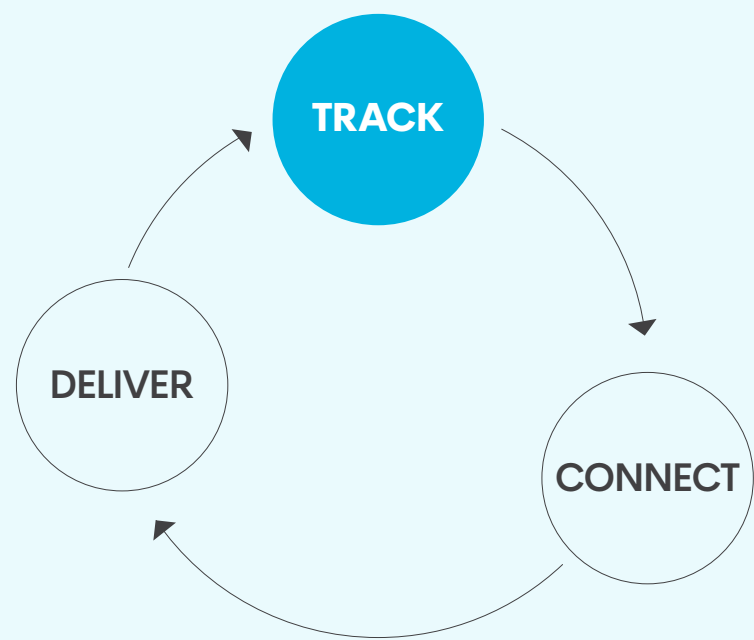
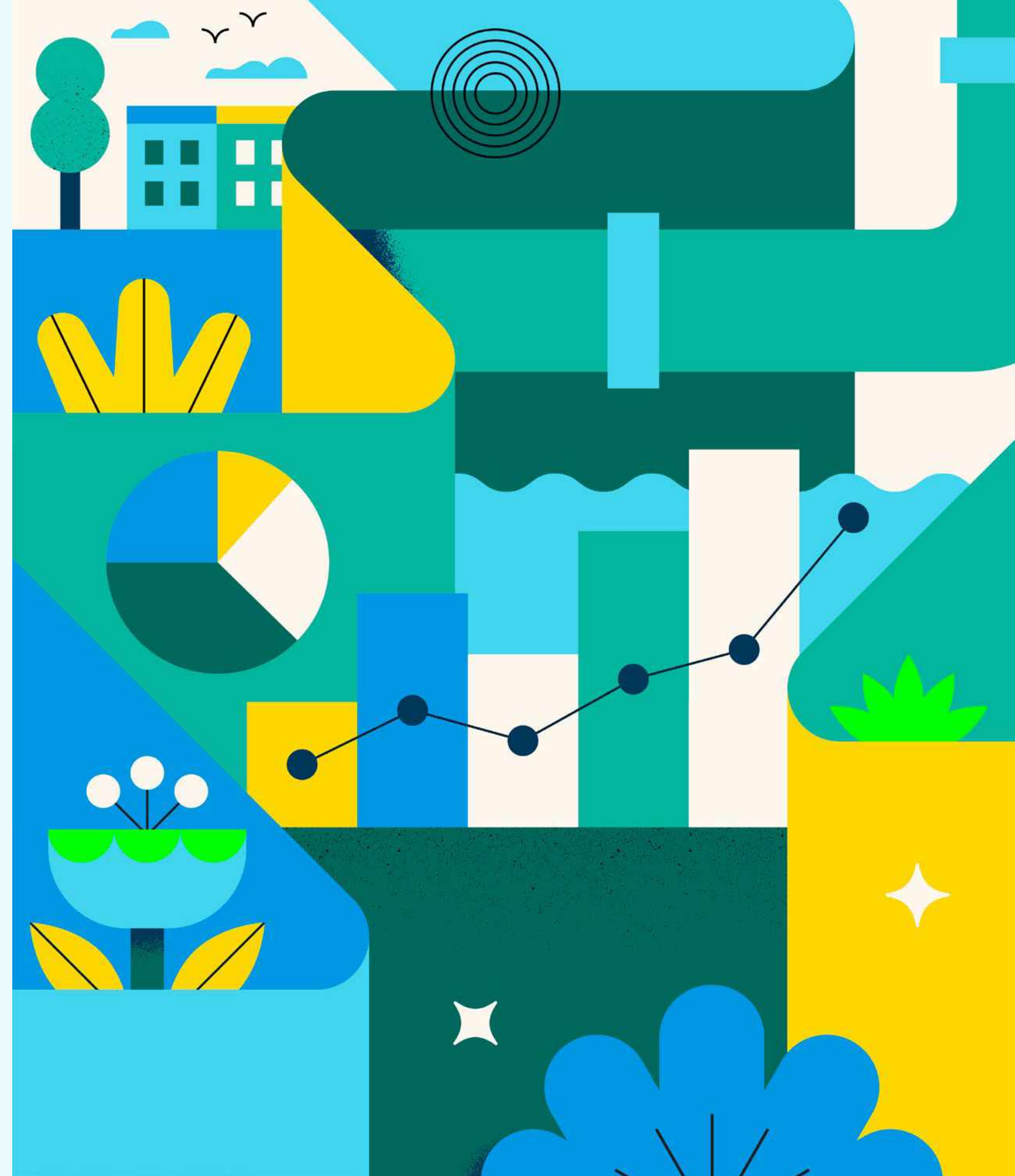
Connect, share ideas and track goals with us and with other occupiers



We provide

Timely and transparent data for your building on water use, energy use and waste.

A comprehensive, individual, decarbonisation roadmap for every building.

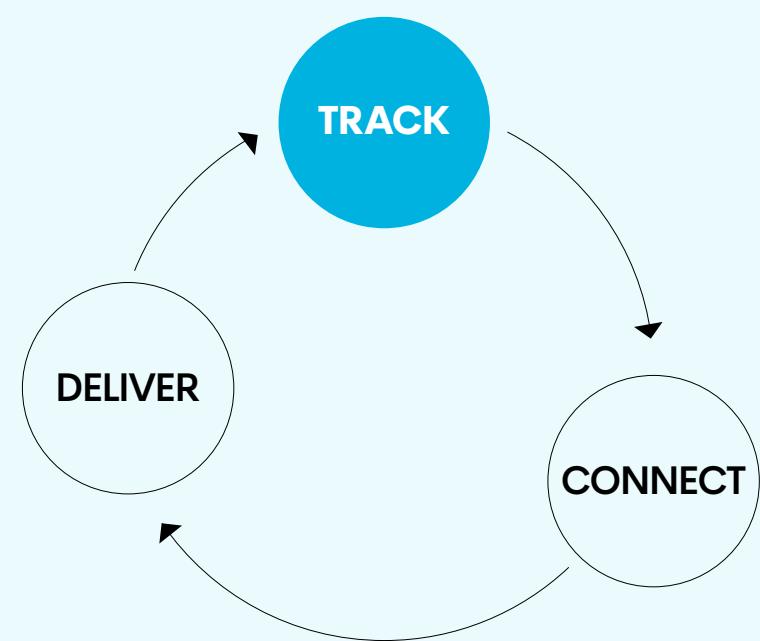


Greater progress, grounded in unprecedented transparency

So you can

Monitor and reduce water use, energy use and waste.

Collaborate and track progress on the long-term plan for your building.



Greater progress, grounded in unprecedented transparency



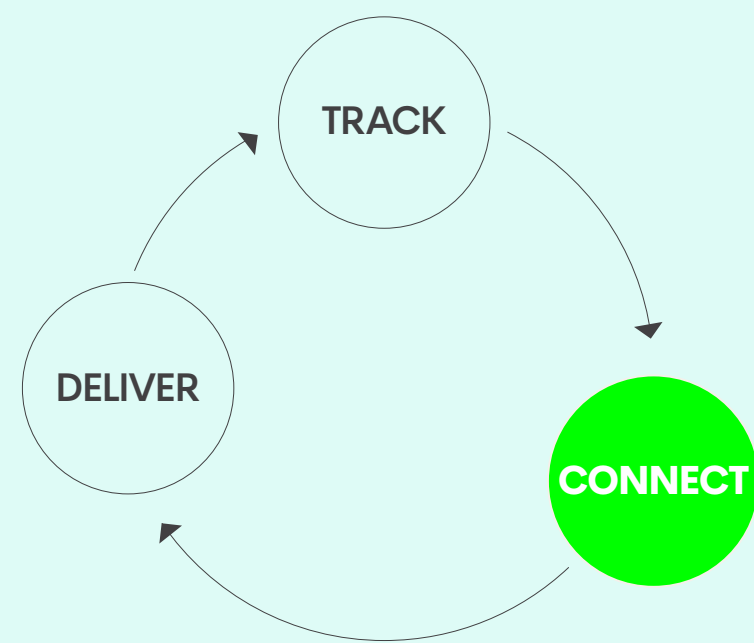
We provide

Knowledge sharing forums for occupiers and our own people.

Approachable experts: subject matter specialists in key ESG topics.

Access to events with industry figureheads, focused on innovation around ESG solutions.

Online resources hosted on the axiis app.



Exchange and collaborate with ambitious partners, to upskill and stay accountable



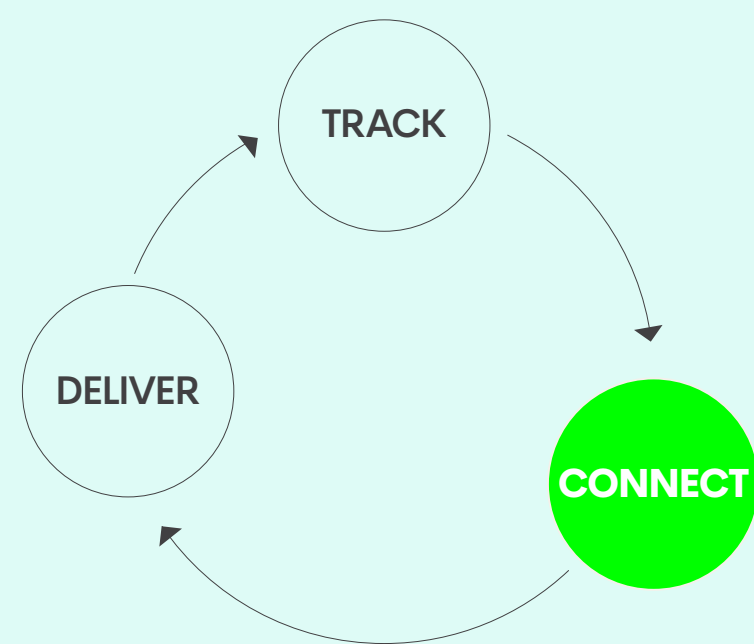
So you can

Collaborate and share ideas with us and other occupiers.

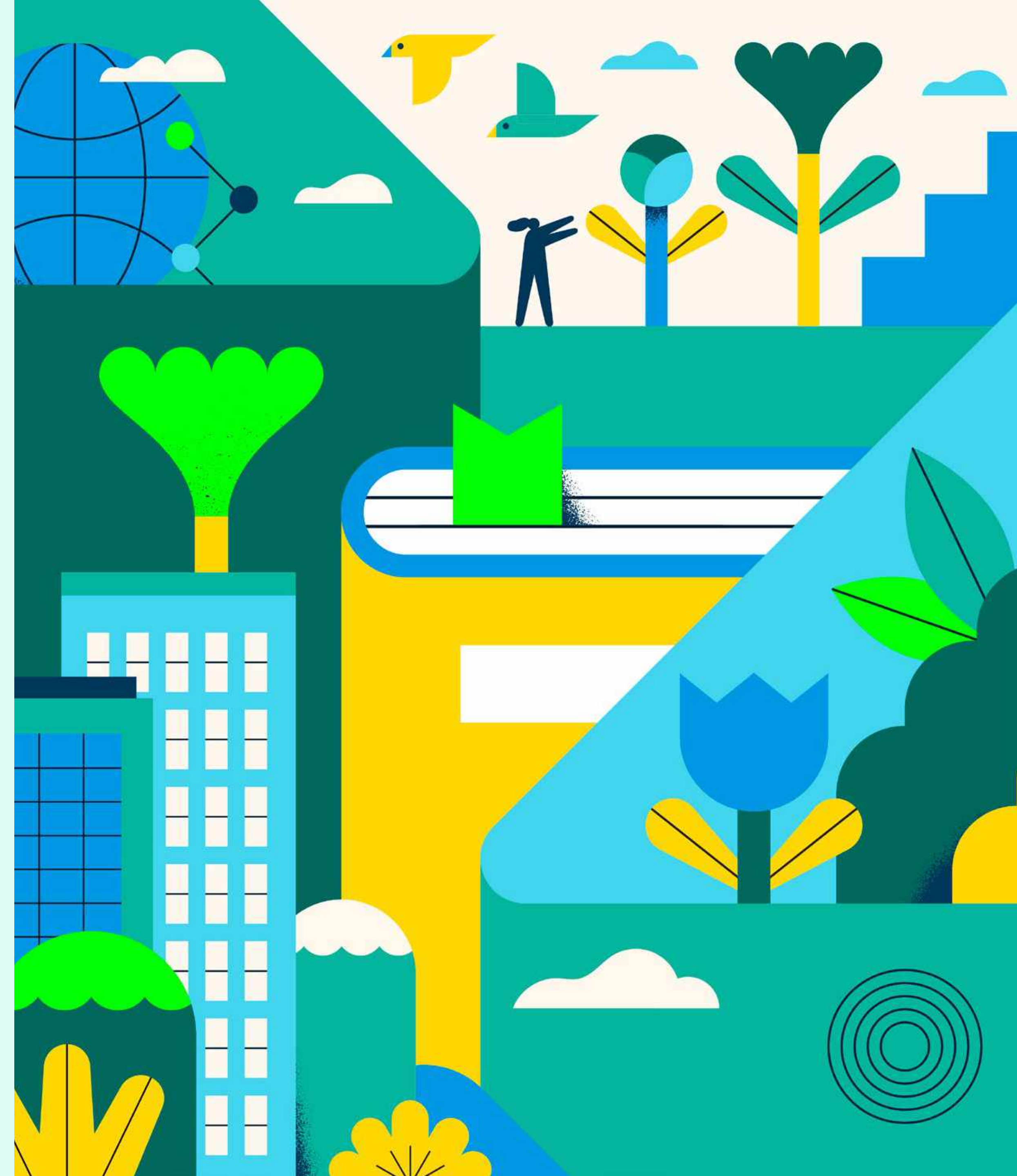
Connect with great minds in sustainability.

Learn from each other, facilitated by us.

Access the knowledge you need to achieve your ESG goals.



Exchange and collaborate with ambitious partners, to upskill and stay accountable

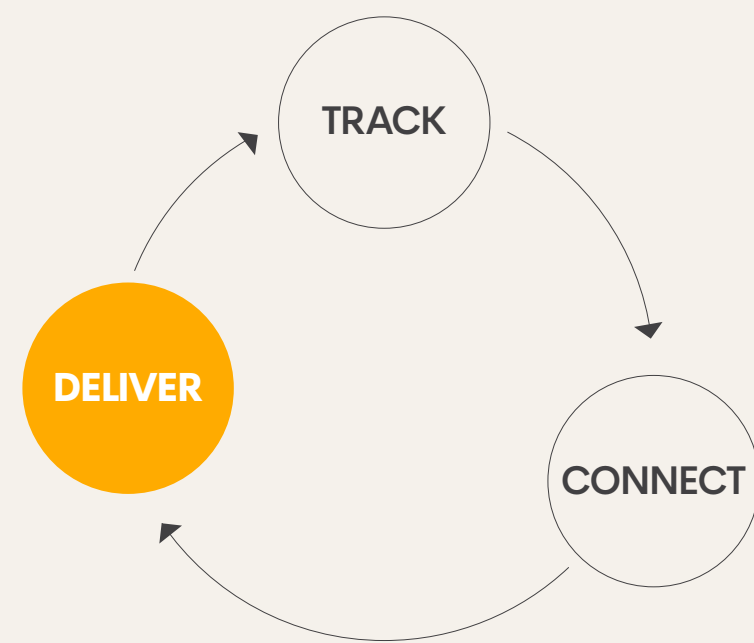


Our headline goals

Halve the carbon emissions across our portfolio by 2030, a 1.5 degree aligned target, verified by SBTi.

Establish a fundraising and volunteering programme all occupiers can participate in.

Improve waste management and reduce water use.



Consistent and continuous improvement that sparks a virtuous cycle

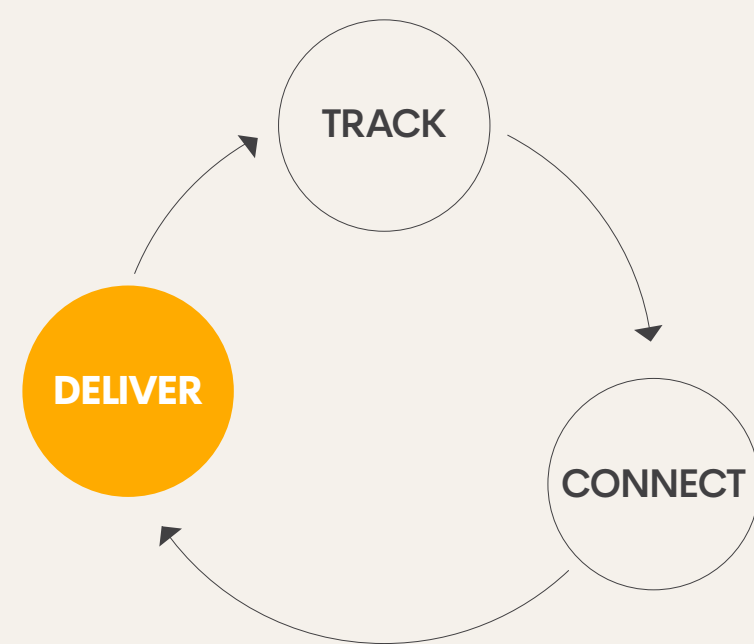


Achieved with your action

Reduce water use, energy use and waste.

Implement occupier actions from the decarbonisation pathways for your building.

Share what you have delivered to equip us with the knowledge of what we can do, to help you achieve more.



Consistent and continuous improvement that sparks a virtuous cycle



The Initiatives that make up Accelerate ESG

The programmes we have implemented to track, connect and deliver.

01 Timely and transparent data

Measure and report up-to-date, intuitive data for your building that covers water use, energy use and waste.



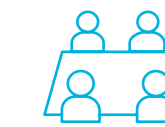
02 Roadmap for every building

Understand the long-term plan for your building. We create comprehensive and individual decarbonisation pathways for each building.



03 Occupier ESG forum

Connect, collaborate and share ideas with other occupiers, facilitated by us.



04 axiis - The Brookfield Properties tenant app

Upskill your team with sustainability knowledge, through the axiis app.



05 Talks and resources

Tap into our event series of talks with industry figureheads hosted with Activated by Brookfield Properties.



06 Approachable experts

Access our team of subject matter specialists to collaborate on a personalised plan to set and achieve ESG goals.



What can our
approachable experts
help you with?



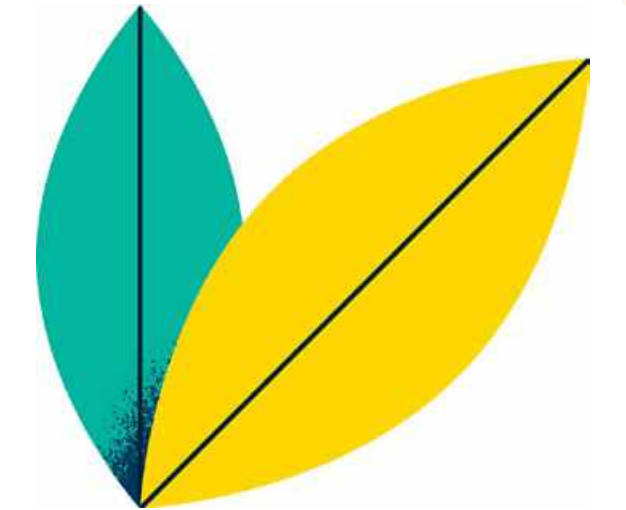
Waste



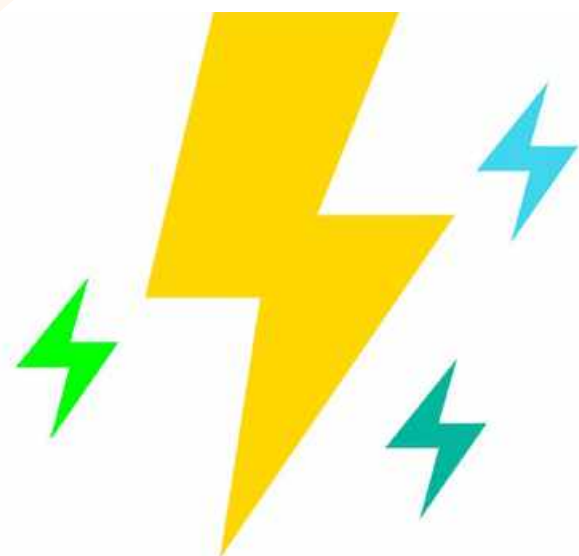
Biodiversity



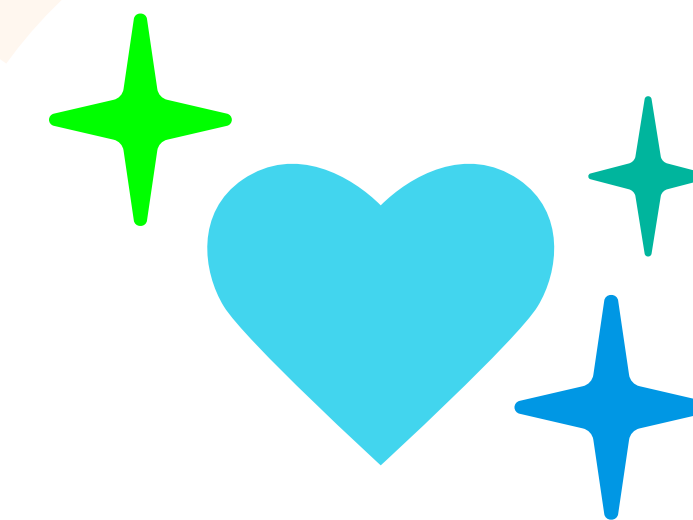
Water



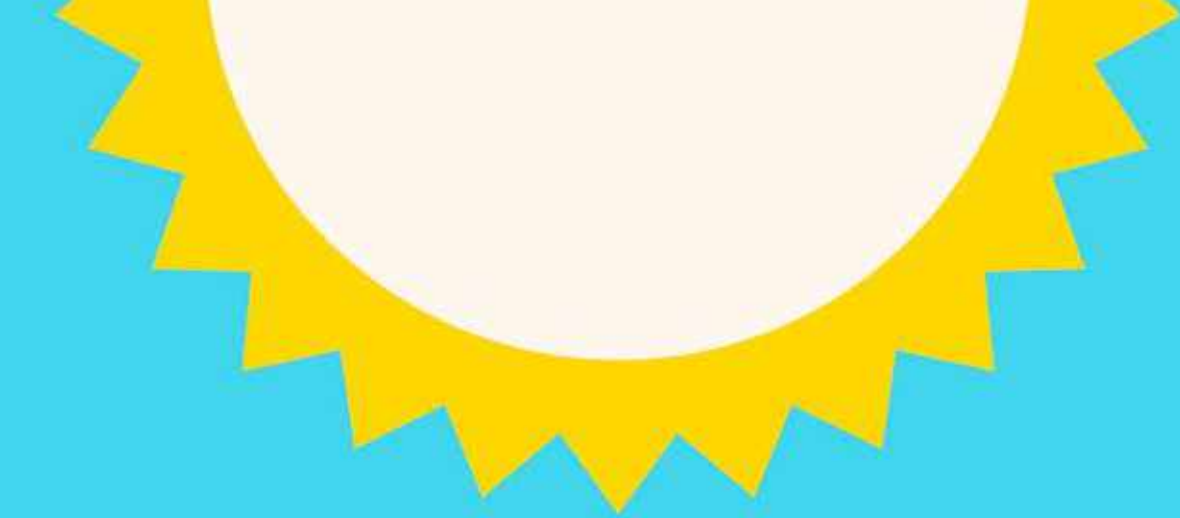
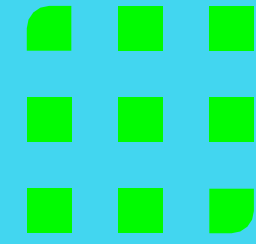
Wellbeing



Energy



Social Value



CASE STUDIES

We are applying
the latest technologies for
sustainability in action





A selection of Brookfield Properties buildings across London creating environmental and social value

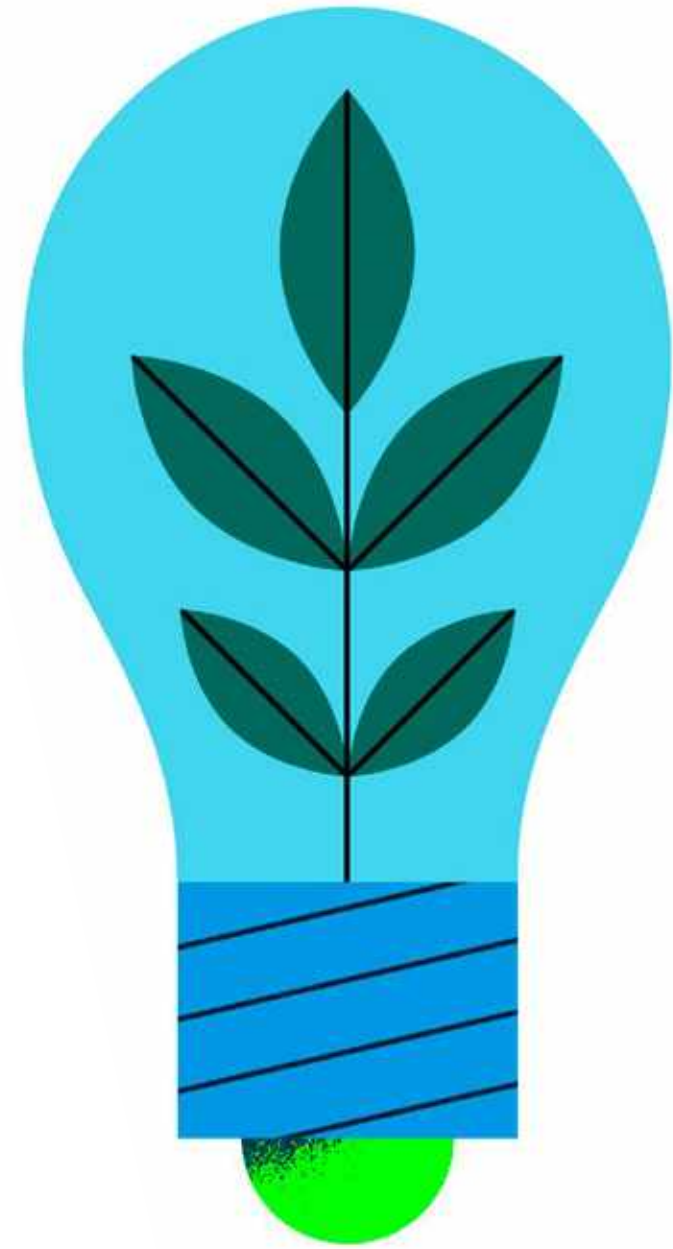
The Gilbert

Sohaila

Nexus

30 Fenchurch

Citypoint



The Gilbert

Net zero carbon in construction

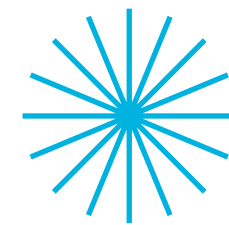
Heritage building fully refurbished to create a new vision of space offering a modern workspace, new amenities, natural daylight, a central courtyard and 6 new roof terraces. This net-zero carbon project preserved both embodied carbon and the outstanding architectural character of the building.

90%

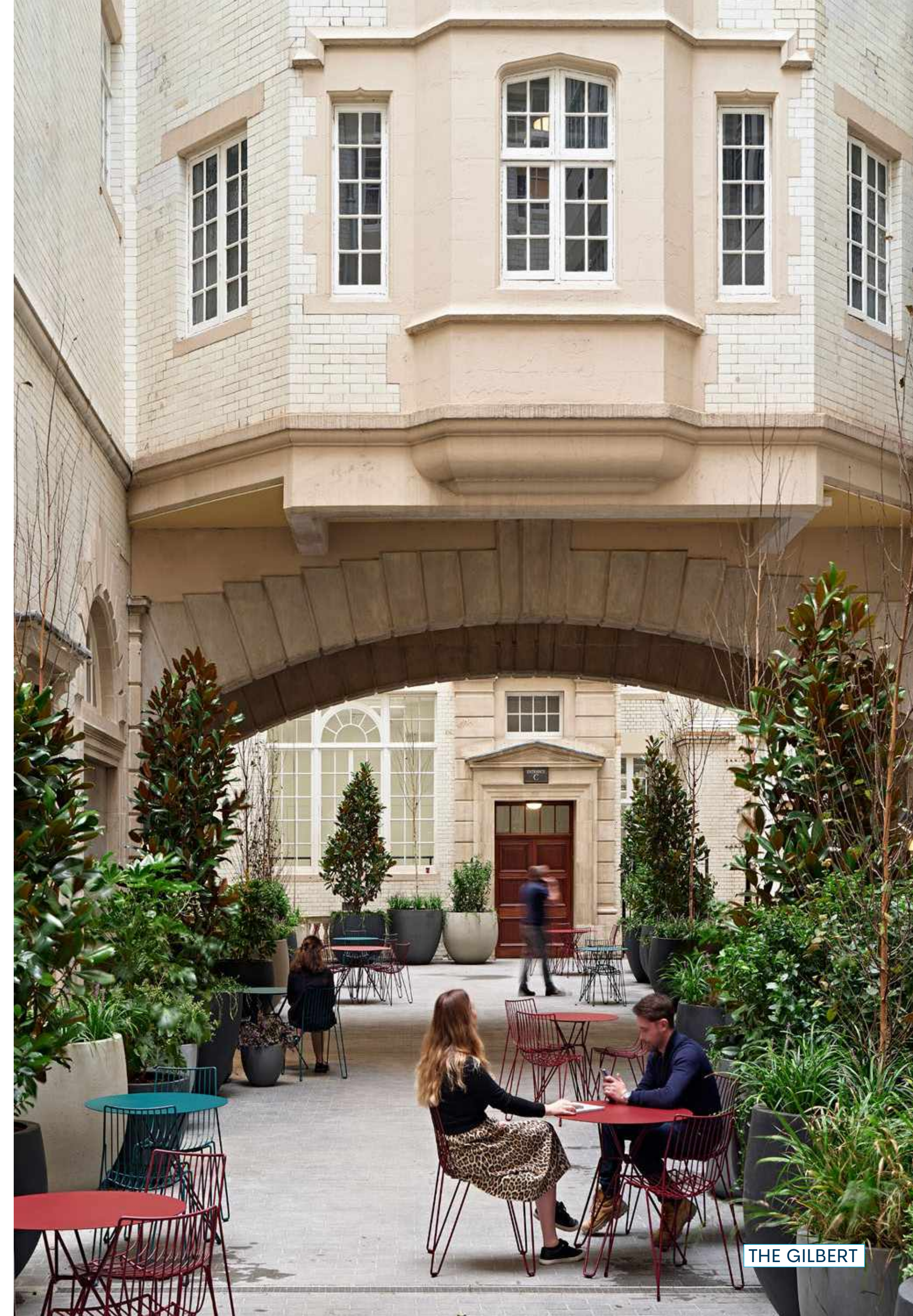
of original structure
retained

7

times less embodied
carbon than industry
targets



extended lifecycle
of building fabric



THE GILBERT



Sohaila

New premises and support for a charity combatting homelessness

Our partner charity offers a pathway from hostel to home through employment and training. Brookfield Properties have provided a rent-free premises and delivered a pro-bono refurbishment, together with our supply chain partners, to create a kitchen and restaurant to further Fat Macy's capabilities.

2,000

hours volunteered

£100k

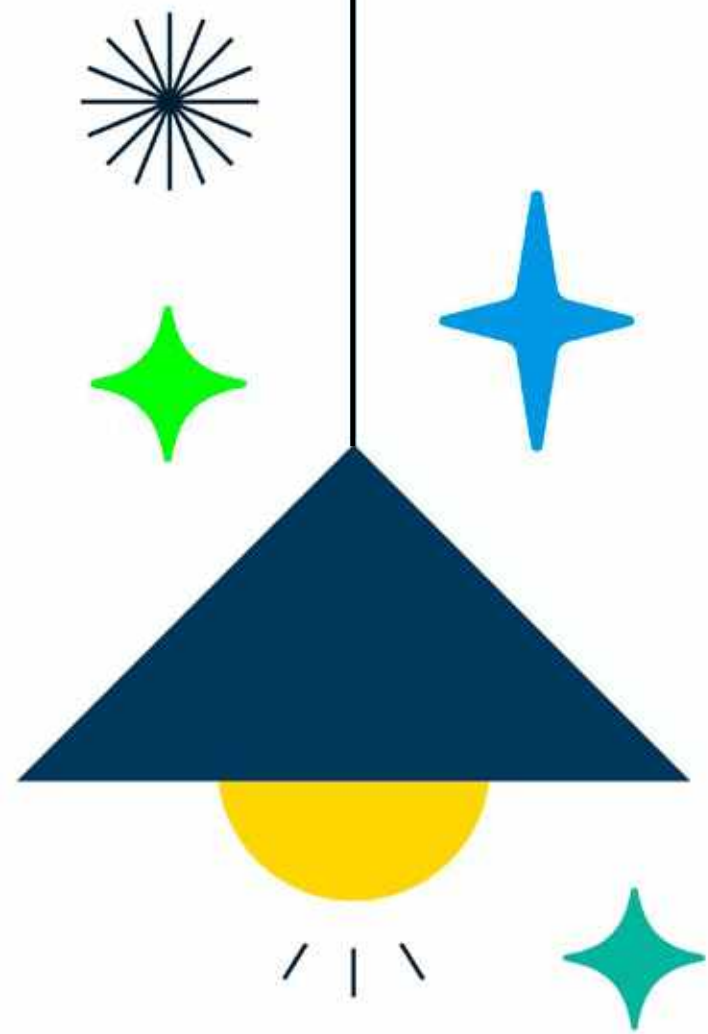
refurbishment
worth £100,000
delivered



rent-free licence
for charity and
mission-driven business

SOHALIA



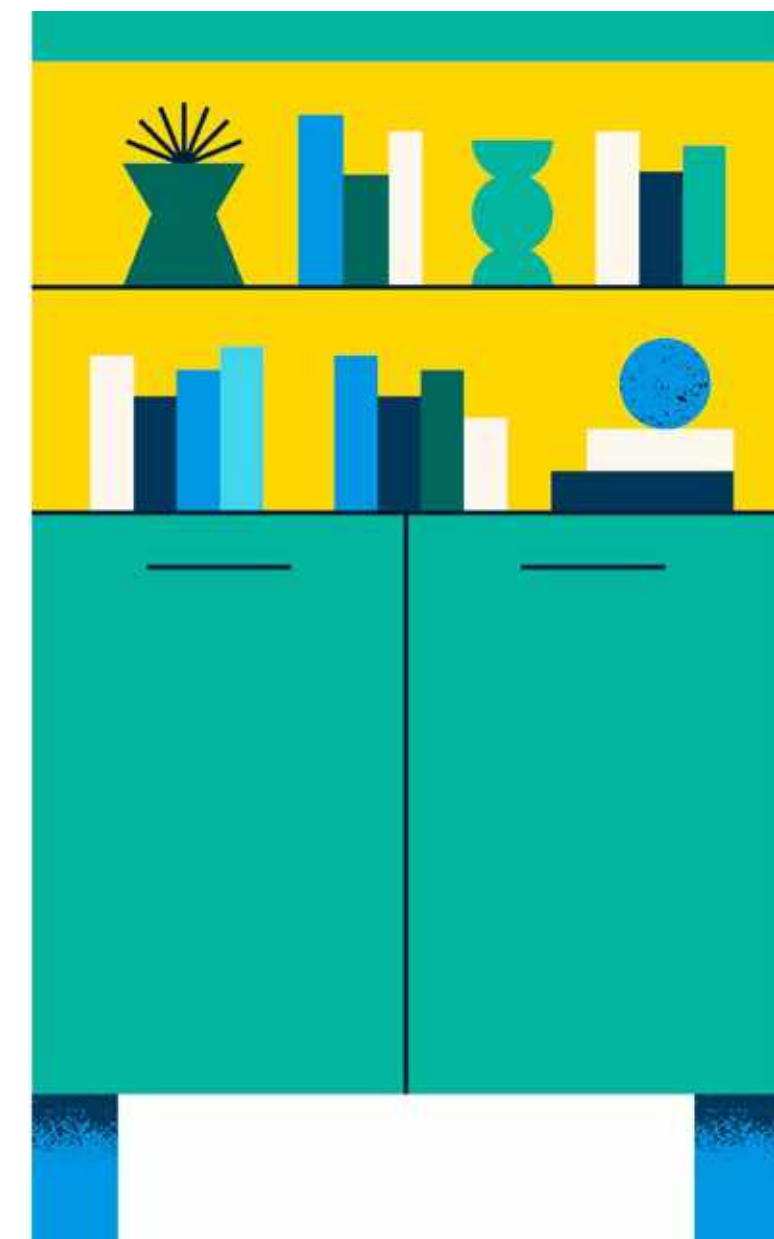


Nexus

Fit-out putting circular economy into practice

Fit-out is real estate's neglected carbon and waste problem. In the urgency to replace fluorescent bulbs with LEDs, for example, it is common practice to discard the old fittings completely. With the refit of Nexus level 10, we proved it's possible to do things differently.

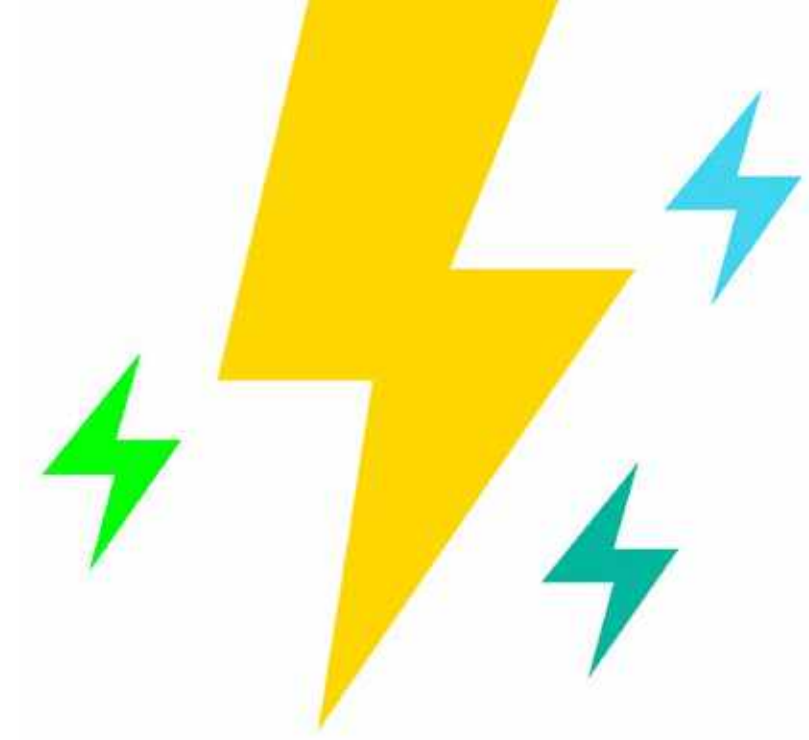
Lighting carcasses and hardwood floors refurbished.
Spare office furniture donated to charity partners.
Doors, walls and ceiling tiles reused and made good.
68% lower carbon emissions than a comparable fit-out.





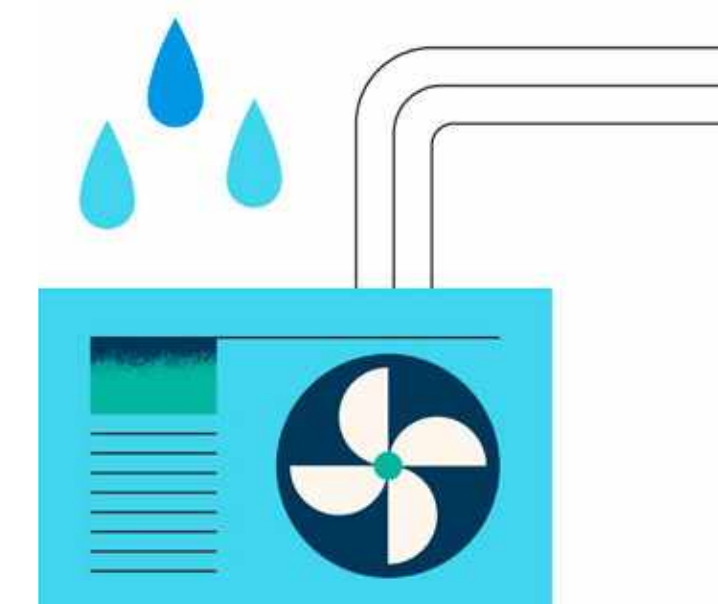
30 Fenchurch

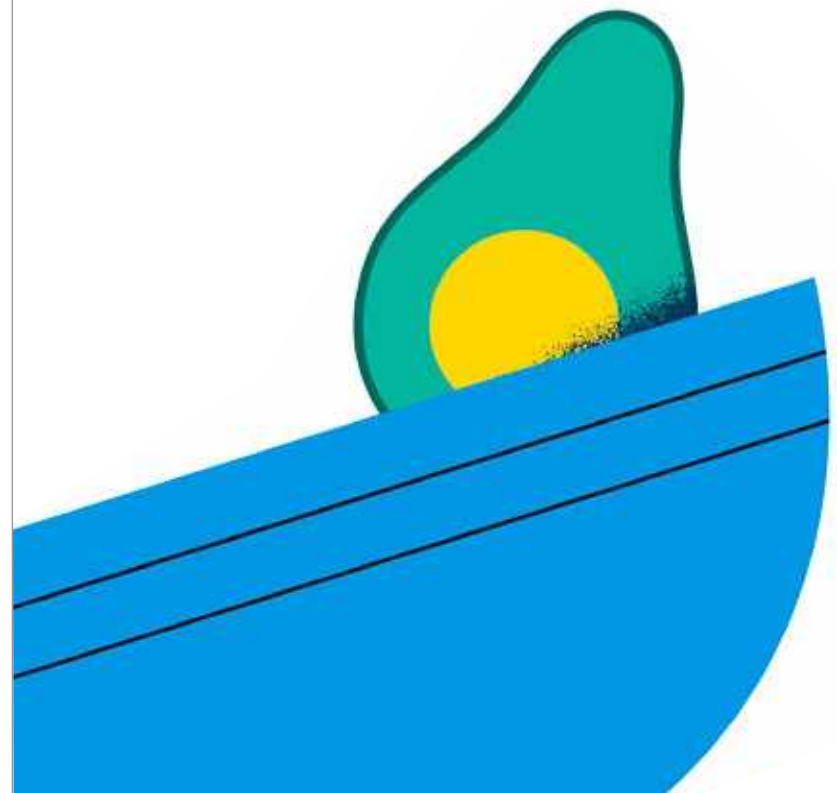
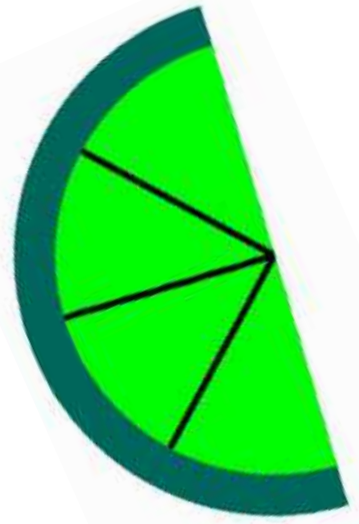
Converting a gas-powered office to an electric landmark



In collaboration with our occupiers, we are undertaking the full electrification of this 545,000 sq ft landmark building – replacing gas boilers with air source heat pumps, all while the building remains open for business.

This hand-in-hand partnership with our occupiers will transform the energy efficiency of the building (from EPC E to EPC B), future proofing it for the Minimum Energy Efficiency Standards (MEES) legislation, well ahead of the proposed 2030 deadline.





Citypoint

New food waste disposal system

New Food Waste disposal 'dehydra' system implemented at Citypoint to reduce food waste. The system dries out all the food it processes by removing its water content and leaving behind a powder dust to dispose of. Reduces the volume and weight of food waste by up to 95%. This supports UN Sustainable Development Goal 12.3 which targets to halve food waste by 2030.

95 %

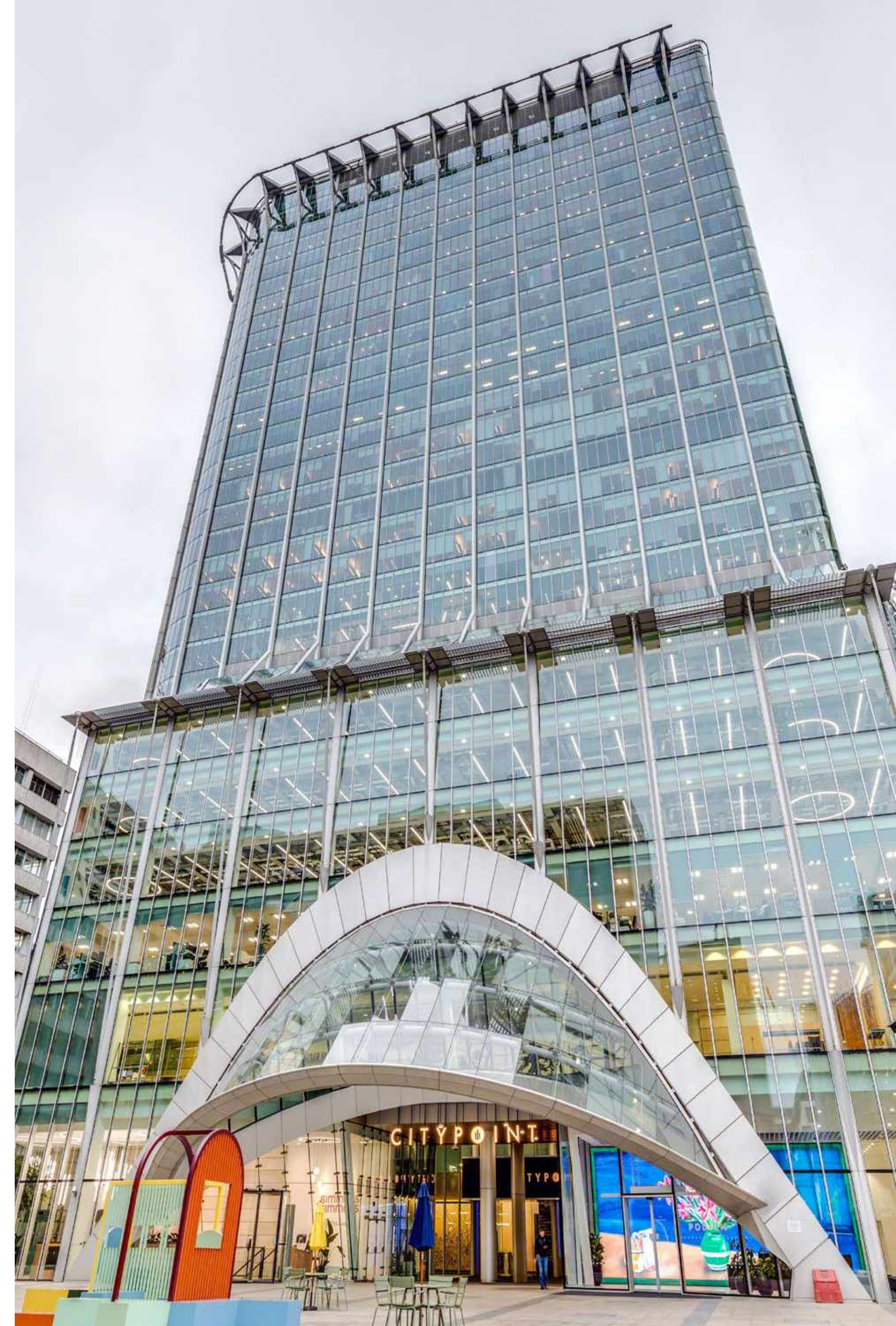
Up to 95% reduction of food waste

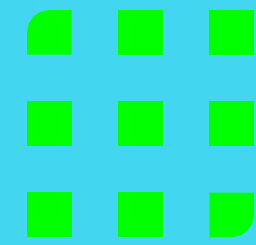
£9,500

Cost saving of £9,500 per year

SDG
12.3

In support of UN Sustainable Development Goal 12.3





IMPLEMENTATION

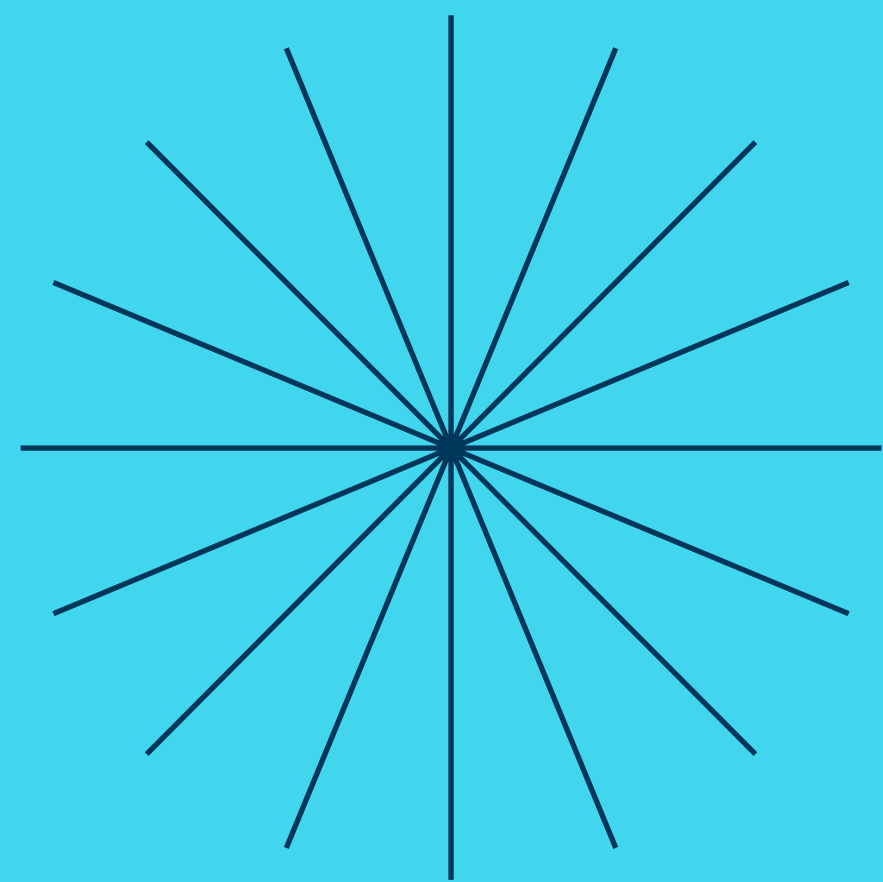
Let's accelerate your sustainability agenda

How to become part of Accelerate ESG



Three steps for success

Here's how we'll work with you to create plans specific to your goals



01

Collaborate on a personalised plan

Together we will help create a sustainability roadmap for your company that aligns your interests, skills and passions with Accelerate ESG's initiatives.

02

Connect with ambitious partners

Meet occupiers at ESG forums, making it easy to work with a like-minded community to drive change.

03

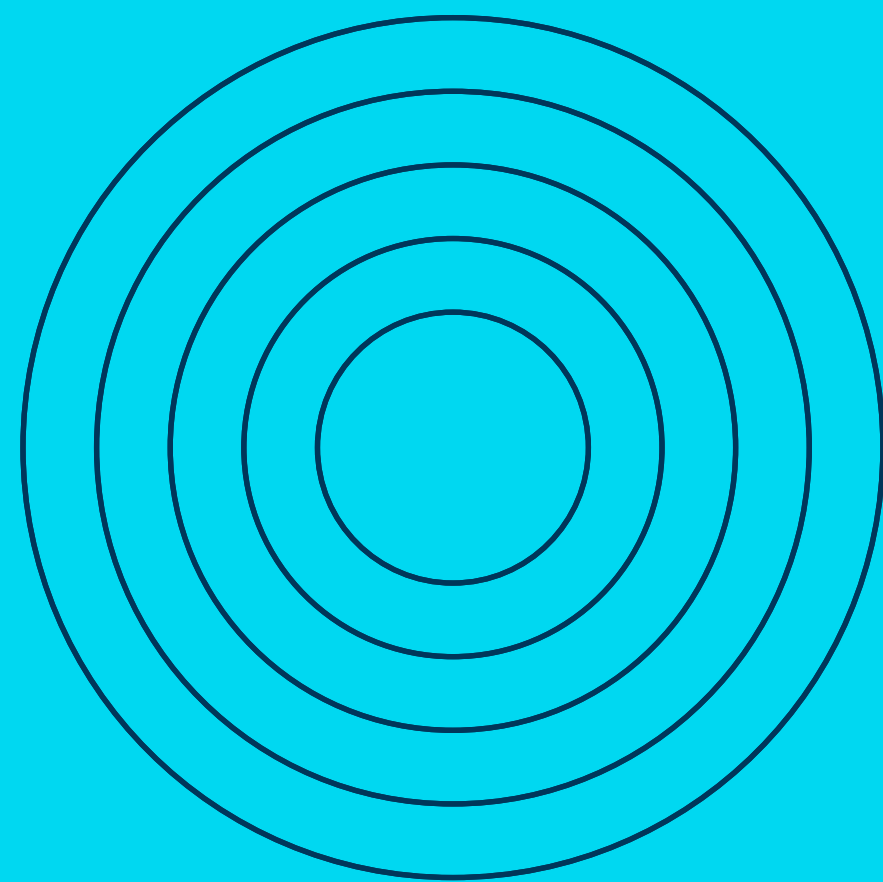
Create a cycle of success

Share your feedback to shape our initiatives and receive updates celebrating ESG success across our London portfolio.



Get started with Accelerate ESG today

Two ways to embark on
your journey



01

Connect with Conor

Reach out to Conor Storkey, the ESG Director of Brookfield Properties, to discuss your goals and get started on a personalised plan.

conor.storkey@brookfieldproperties.com



02

Occupier ESG forum

Book on the Axiis app.

Axiis is your one-stop shop for talks, events, resources and forum dates.



BOOK VIA
THE AXIIS APP



SIGN UP WITH YOUR
WORKPLACE EMAIL

Thank you

Comments, questions or feedback?

conor.storkey@brookfieldproperties.com

