

BAY ADELAIDE EAST

22 ADELAIDE STREET W - TORONTO, ON



Operating Costs	Realty Taxes	Hydro	Total*
\$12.25	\$13.23	\$0.94	\$26.42

*2021 estimate

Available Space @ Bay Adelaide East

Floor	Size (Sq. Ft.)	Date Available	Condition	Floor Plan
27	1,812	Immediate	Base Building	Click Here
28	22,237	03/01/2022	Built out	Click Here
37	3,216	05/01/2022	Built out	Click Here

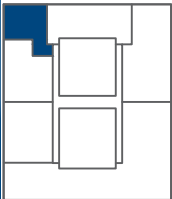
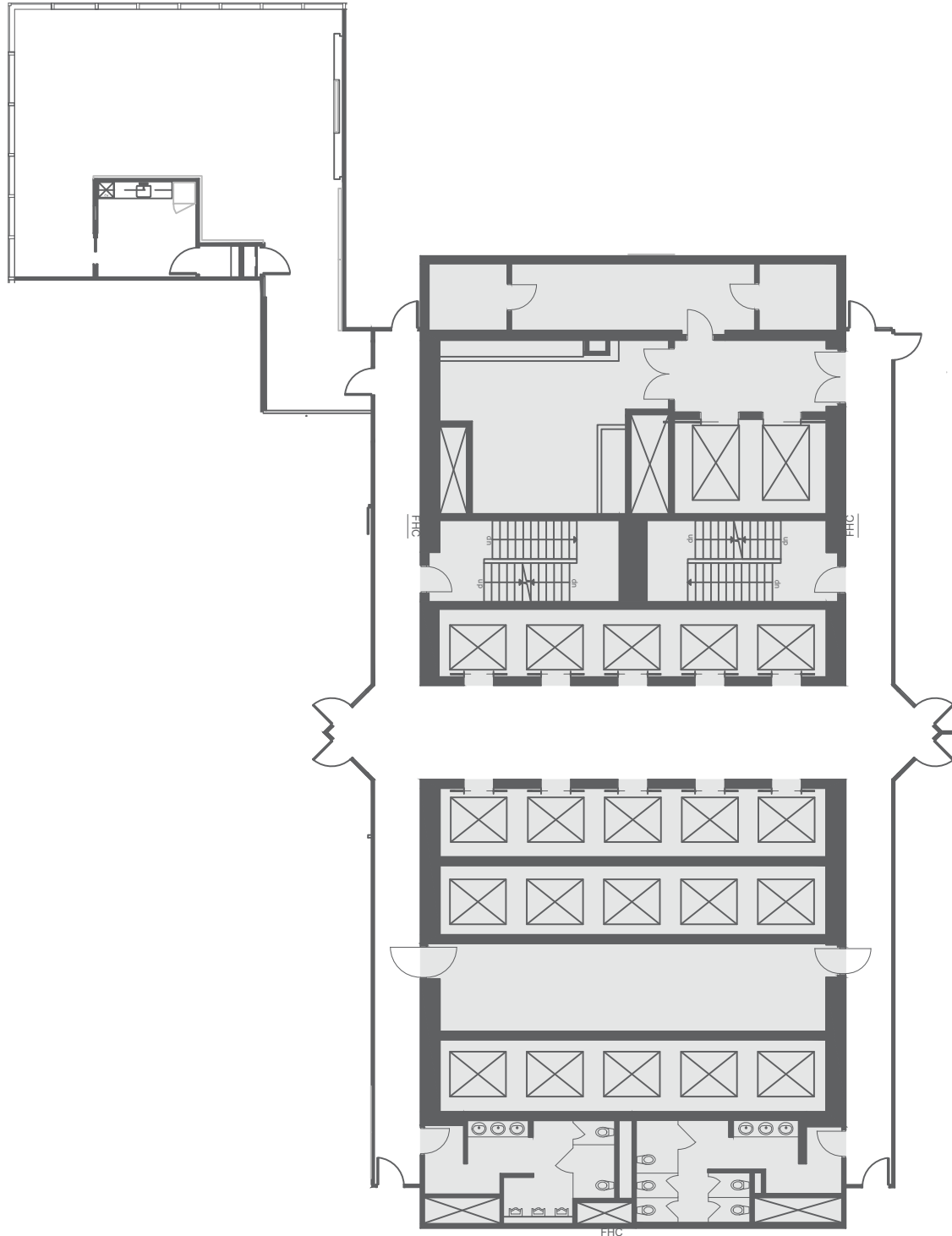
Contact Information:

Jack Flatley
416.943.7901
jack.flatley@brookfieldproperties.com

Bob MacNicol
416.369.2310
bob.macnicol@brookfieldproperties.com

BAY ADELAIDE CENTRE EAST TOWER

22 Adelaide Street West, Toronto, Ontario

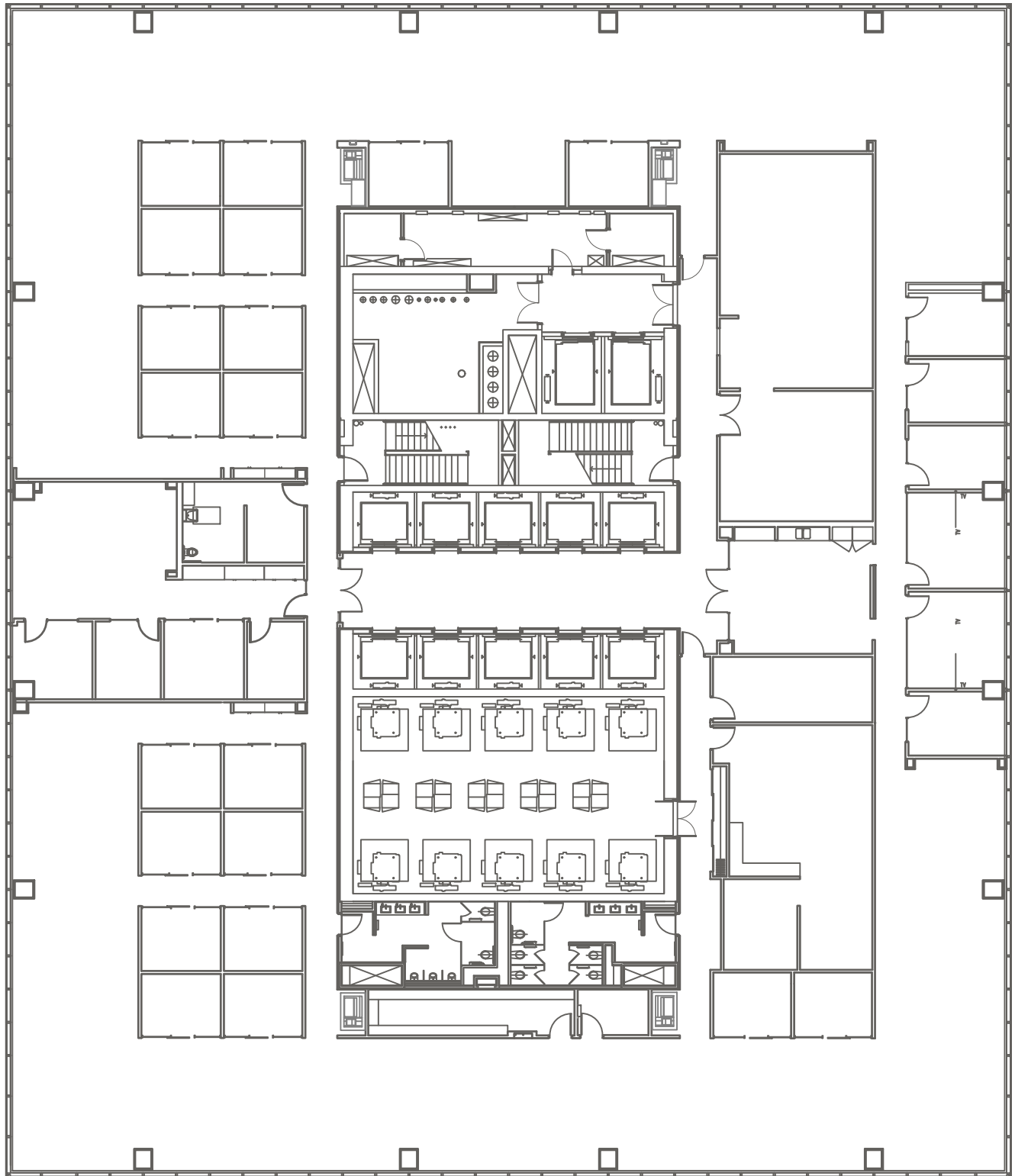


27th Floor

1,812 rentable square feet

BAY ADELAIDE CENTRE East TOWER

22 Adelaide Street, Toronto, Ontario



28th Floor

22,237 rentable square feet